



GLOBAL

DEFENSE CORPS

BY WAYNE & FLEMING



XAERYUS
COMICS

ISSUE
1

GLOBAL **DEFENSE CORPS**

PRODUCED BY THE



EARTH HAD BEEN SENDING RADIO WAVES INTO SPACE FOR OVER A CENTURY BEFORE ITS INHABITANTS WERE FIRST VISITED BY AN ORGANIZED EXPEDITION FROM ANOTHER SOLAR SYSTEM. THE FIRST INVASION FORCE FOLLOWED SOON AFTER. NATIONS TRIED TO COMBINE THEIR EFFORTS AND FIGHT THE INVADERS BUT POOR COMMUNICATIONS AND POWER STRUGGLES BETWEEN THE HUMANS RESULTED IN UNNEEDED CASUALTIES, BOTH MILITARY AND CIVILIAN. IT WAS FROM THESE EXPERIENCES THAT EARTH'S LEADERS DECIDED TO FORM A UNIFIED BODY OF PERSONNEL FROM EVERY MEMBER NATION, KNOWN AS THE GLOBAL DEFENSE CORPS.

TASKED WITH THE PRESERVATION OF EARTH'S POPULATION, THE GLOBAL DEFENSE CORPS WORKS TIRELESSLY TO OBTAIN INTELLIGENCE ON THREATS TO EARTH'S POPULATION AND TRAIN THEIR OFFICERS TO RESPOND TO THOSE THREATS. GD1, THE MOST ELITE SQUAD IN THE GDC, IS HAND-PICKED BY CAPTAIN CHU AND COMPRISED OF THE MOST ELITE FIGHTERS FROM THE MEMBER NATIONS. SERGEANT RAMESH, CORPORAL PEREZ, LIEUTENANT BRIAR, SERGEANT YAMAMATO, AND SPECIALISTS ELLIS & HASAD ARE THE BEST HOPE OF EARTH'S CONTINUED SURVIVAL.

ISSUE ONE

J WAYNE
STORY

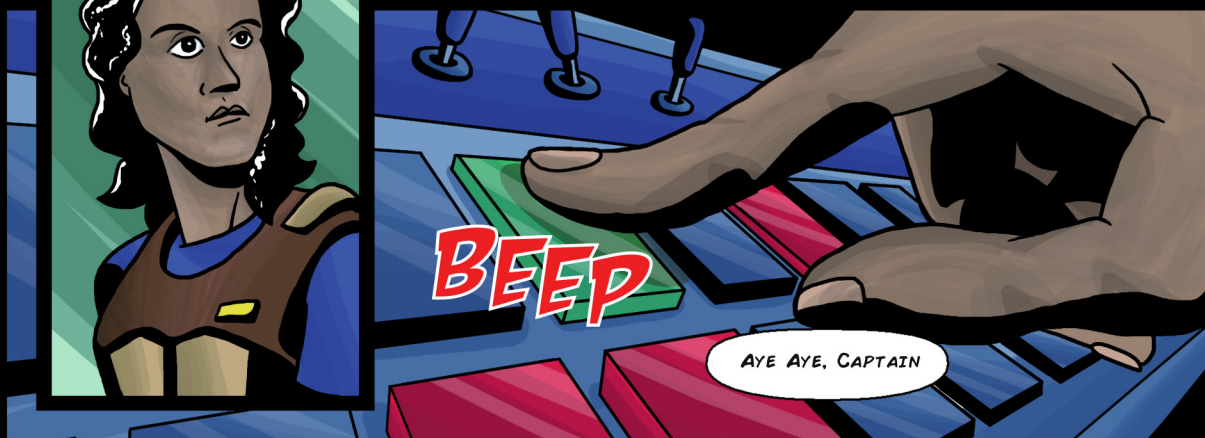
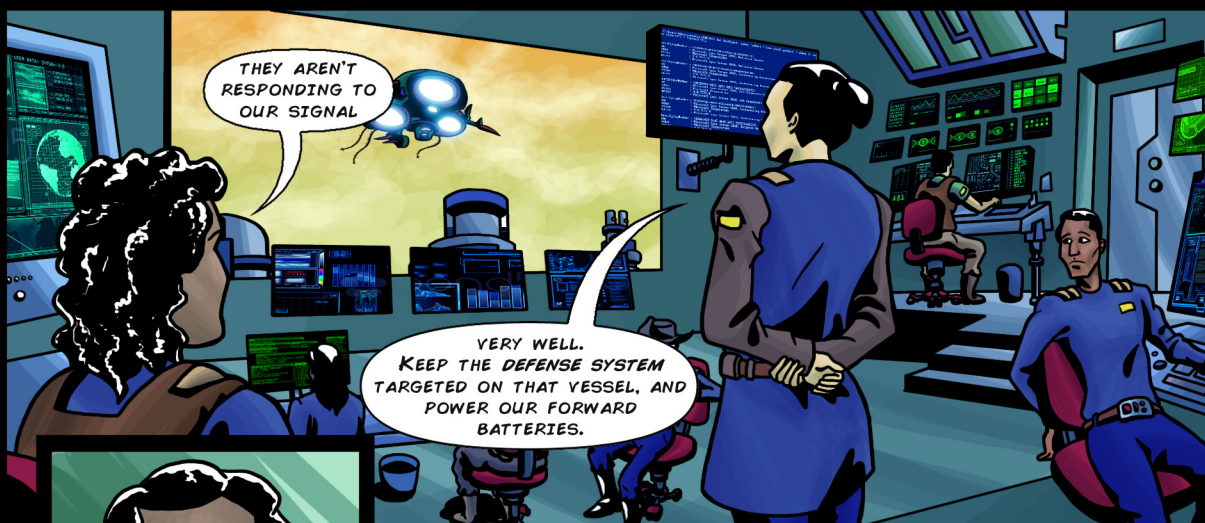
RICHARD FLEMING
ART & COLORS

WILLIAM BENNISON
LETTERS

ANNIE KRUEGER
EDITOR

THE INTERNATIONAL ANTIMICROBIAL COUNCIL, AMCOUNCIL.org
Artwork by RICHARD FLEMING, STARTWITHASKELETON.com

©2014 XAERYUS COMICS

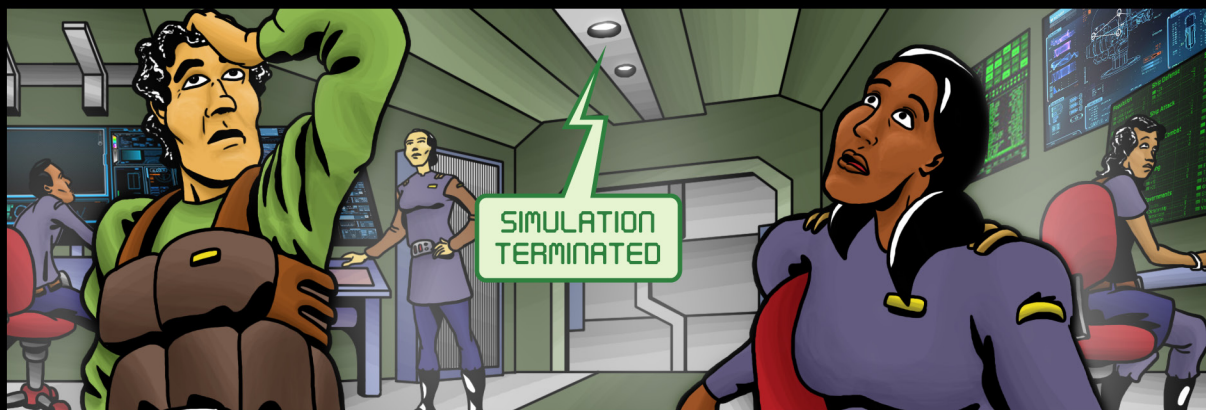
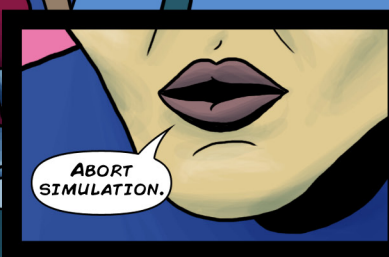
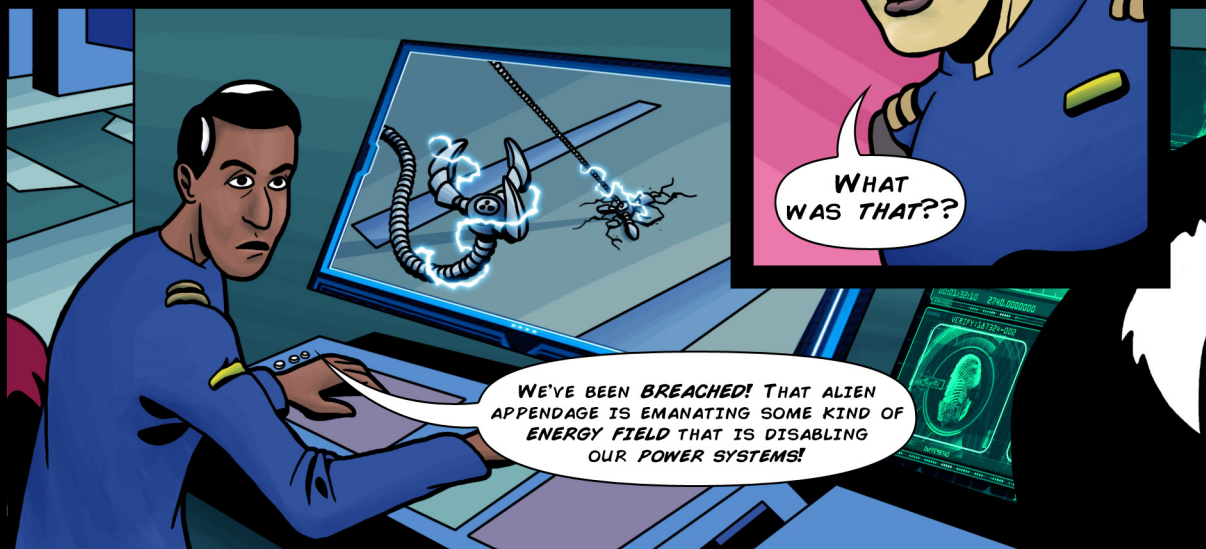


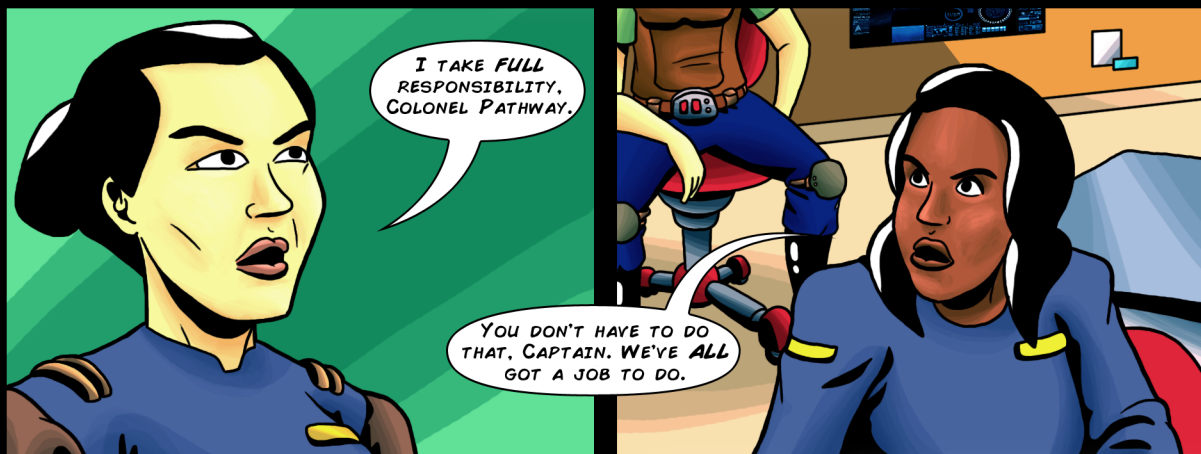
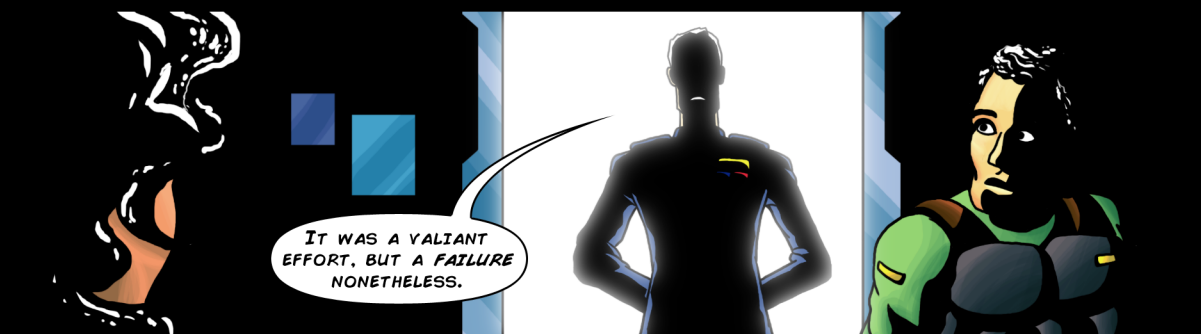
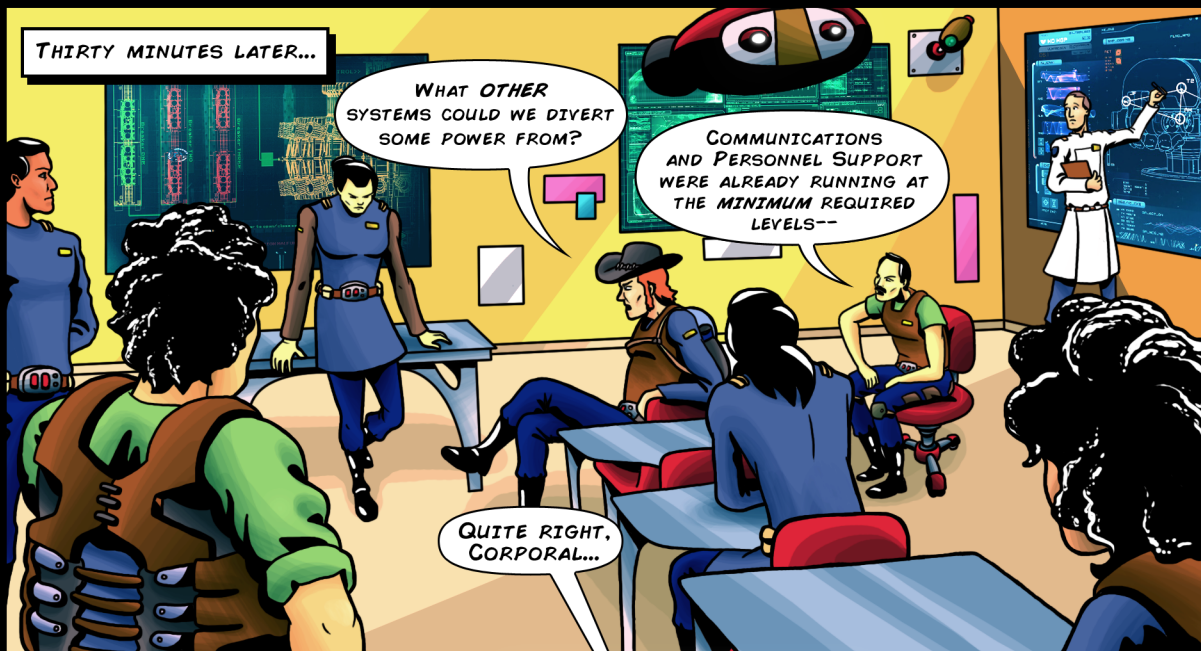






CRACK

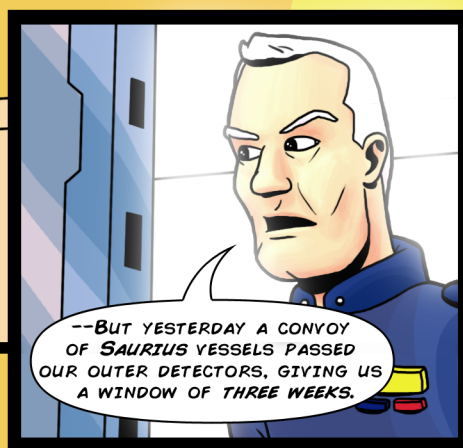




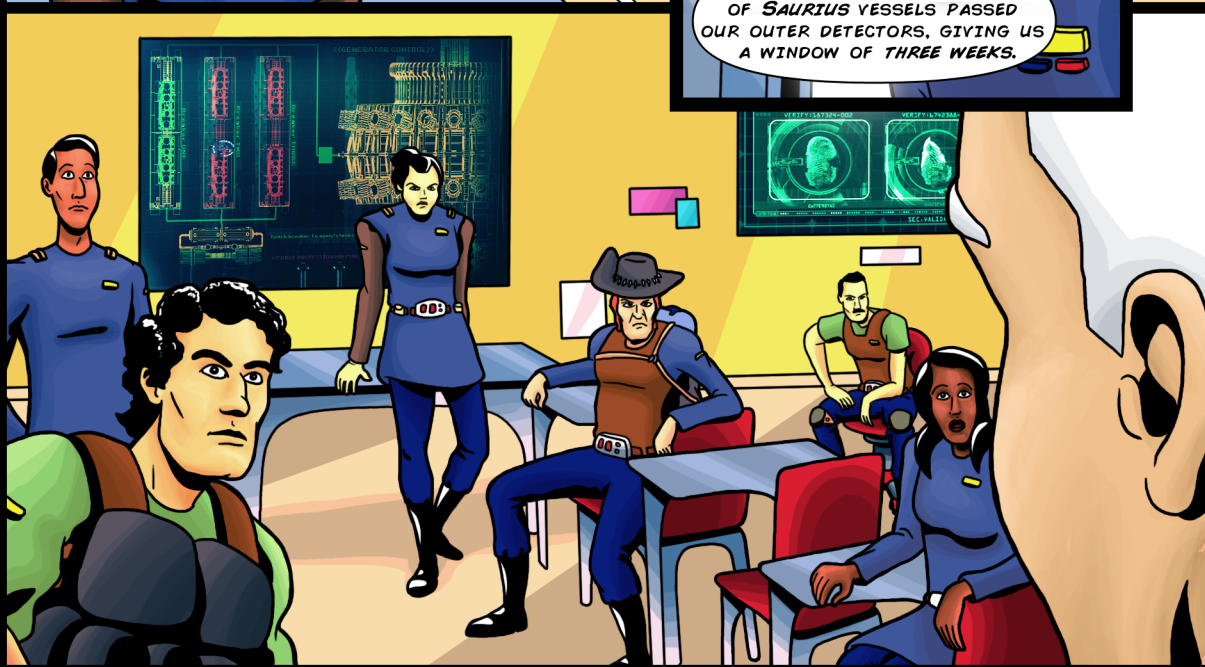


THE REAL THING?
BUT THIS WAS SUPPOSED
TO BE IN THE TESTING
PHASE FOR ANOTHER
FOUR MONTHS!

THAT WAS
THE PLAN--

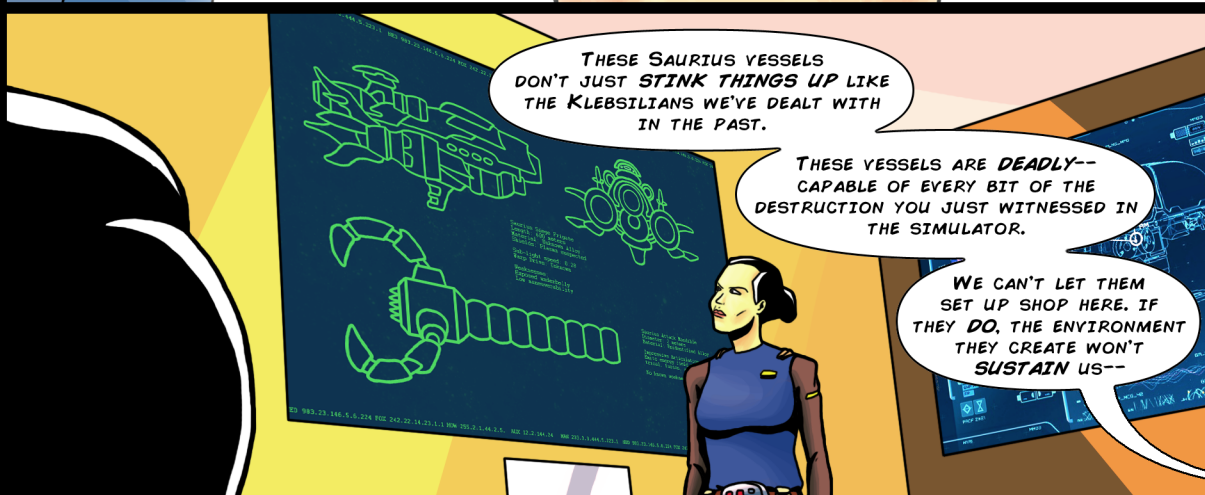


--BUT YESTERDAY A CONVOY
OF SAURIUS VESSELS PASSED
OUR OUTER DETECTORS, GIVING US
A WINDOW OF THREE WEEKS.



I'M GLAD YOU ALL
APPRECIATE THE SERIOUSNESS
OF THE SITUATION.

LIEUTENANT BRIAR,
WOULD YOU PLEASE
BOOT UP THE DISPLAY
SCREEN?



THESE SAURIUS VESSELS
DON'T JUST STINK THINGS UP LIKE
THE KLEBSILIANS WE'VE DEALT WITH
IN THE PAST.

THESE VESSELS ARE DEADLY--
CAPABLE OF EVERY BIT OF THE
DESTRUCTION YOU JUST WITNESSED IN
THE SIMULATOR.

WE CAN'T LET THEM
SET UP SHOP HERE. IF
THEY DO, THE ENVIRONMENT
THEY CREATE WON'T
SUSTAIN US--



AND WE ARE RUNNING OUT OF TIME.

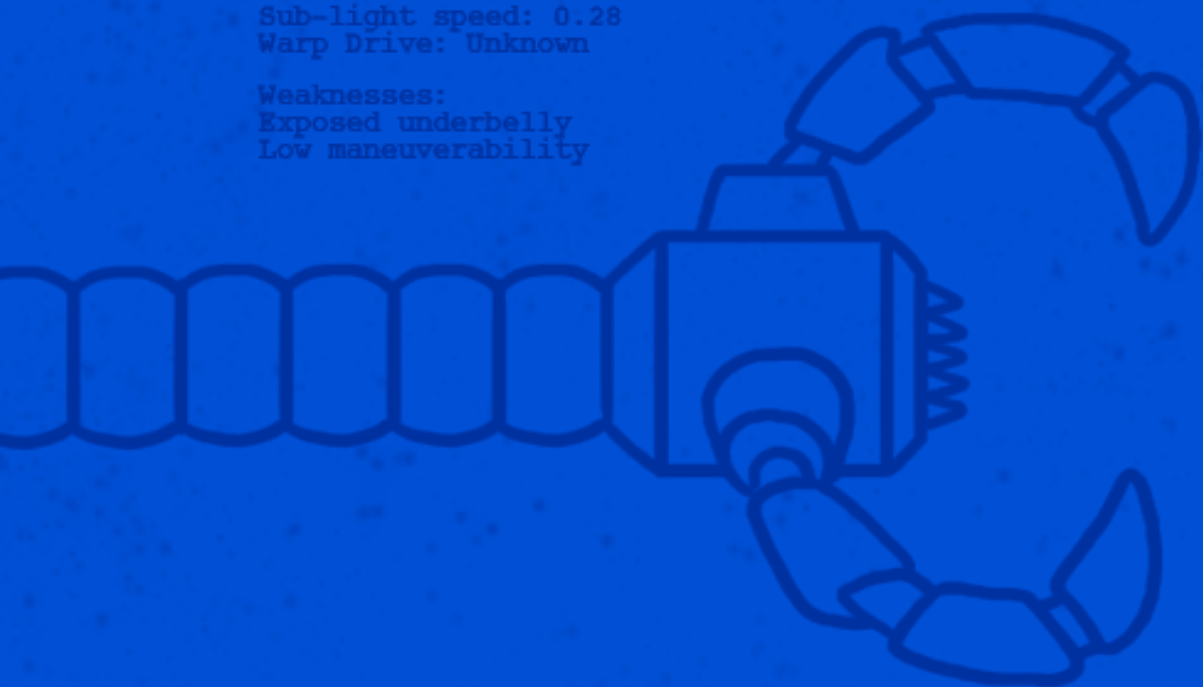
983.23.146.5.6.224 FOX 242.22.14.23.1.1 HOW 255.2.1.44.2.5. AUX 12.2.144.24



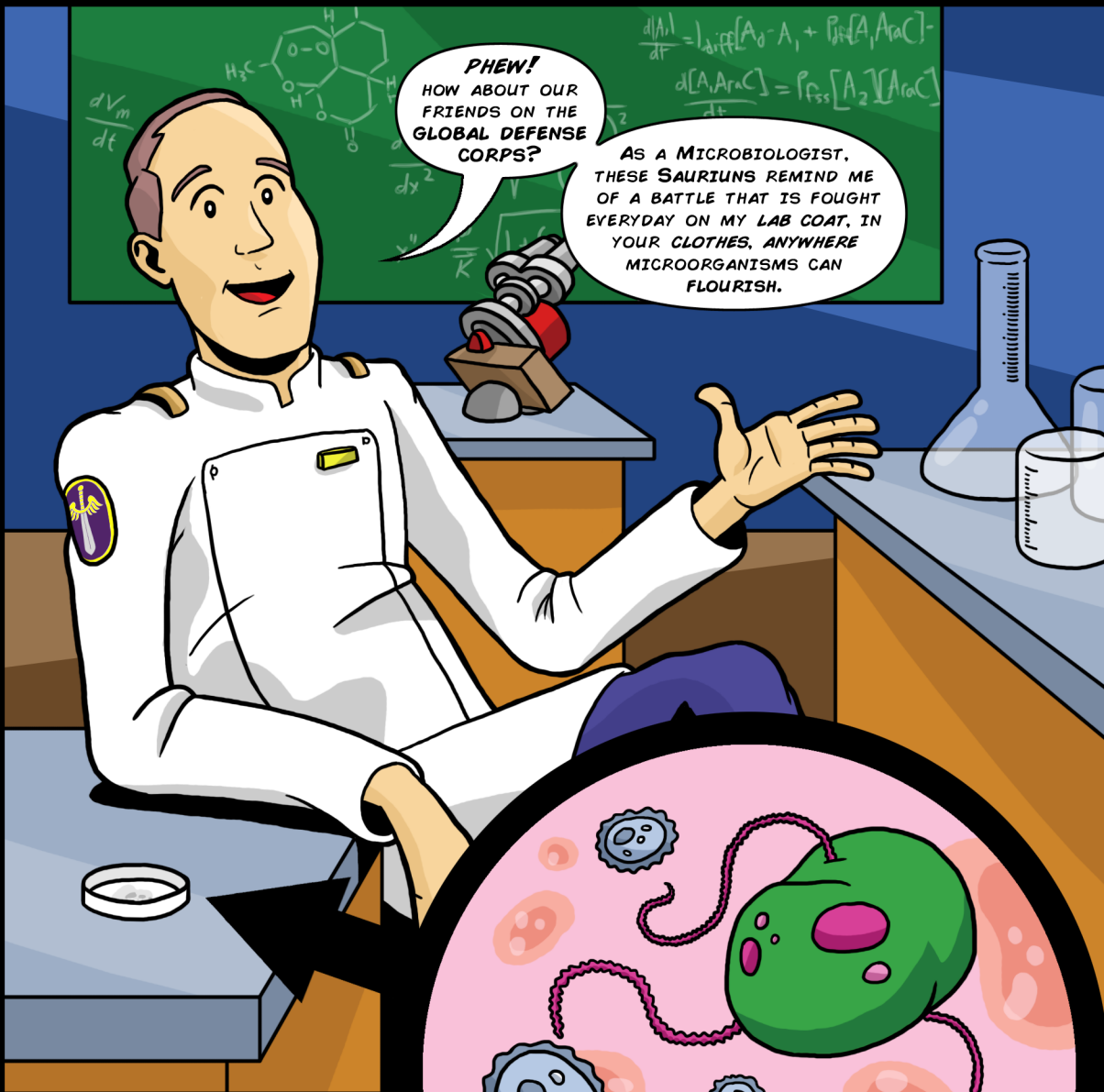
Saurius Siege Frigate
Length: 600 meters
Material: Unknown Alloy
Shields: Plasma suspected

Sub-light speed: 0.28
Warp Drive: Unknown

Weaknesses:
Exposed underbelly
Low maneuverability



3.3.444.5.223.1 NED 983.23.146.5.6.224 FOX 242.22.14.23.1.1 HOW 255.2.1.44.2.



PHEW!
HOW ABOUT OUR
FRIENDS ON THE
GLOBAL DEFENSE
CORPS?

AS A MICROBIOLOGIST,
THESE SAURIUNS REMIND ME
OF A BATTLE THAT IS FOUGHT
EVERYDAY ON MY LAB COAT, IN
YOUR CLOTHES, ANYWHERE
MICROORGANISMS CAN
FLOURISH.



THESE
INVADERS CAN
BE RECOGNIZED BY
THE ODORS THEY
CAUSE--

BUT WITH THE RIGHT
TECHNOLOGICAL DEFENSES
THEIR ASSAULT CAN BE
MINIMIZED, OR EVEN
CIRCUMVENTED.

**TO BE
CONTINUED...**